



# OCT Series Ozone Cooling Tower Systems

## Ozone Water Technologies

### OVERALL

We took our most popular ozone generators and combined with all the ancillary components that make up the perfect turn-key systems. The Ozone Cooling Tower Systems (OCT) from Ozone Water Technologies are properly designed in size and as uncomplicated as possible.

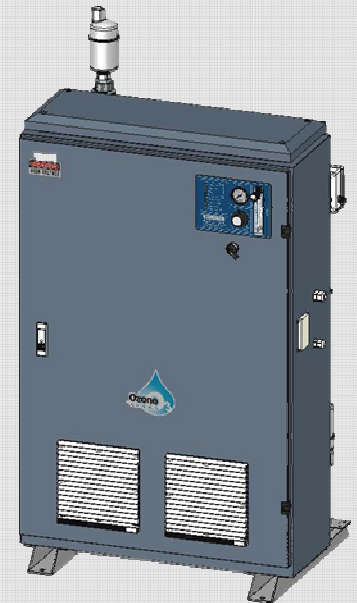
The OCT series are turn-key, skid-mount, air-cooled, corona discharge (CD) type ozone/water contacting systems specifically designed for cooling tower applications. The system incorporates complete CD type ozone generator with internal PSA oxygen module, system operation & function indicating control panel, ozone injector with bypass valve, water backflow prevention device, PVC contacting vessel with degas valve, gray epoxy powder coated mild steel cabinet with stainless steel mounting base and with the main function of ORP controlled auto ozone output adjusting & ozone safe interlock. The oil-less compressor, water boost pump, ORP controller & ozone destructor are optional. The OCT series are capable of producing ozone in 10, 20, 30 & 40g/hr to treat cooling tower from 100 up to 800 Cooling Tons. They can be connected in parallel for 1000 Tons and up output.

### Design Features

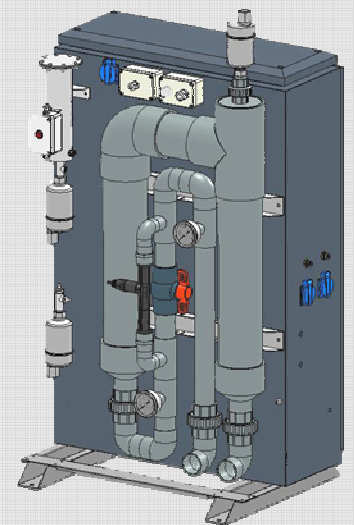
- Corona Discharge (CD)
- Integrated PSA Module(s)
- Contacting Vessel Combined
- Degas & Auto Drain Valves
- Oil-less Compressor(s) Equipped
- Automatic Control
- Ozone Boost Pump
- ORP Controller
- Ozone Destructor

### Benefits

- Power & water saving
- Biofilm & scale reduced
- Improve heat mass transfer
- Cleaner & lower sewer charges
- Less corrosion on all wetted parts
- Safe green technology



Front View



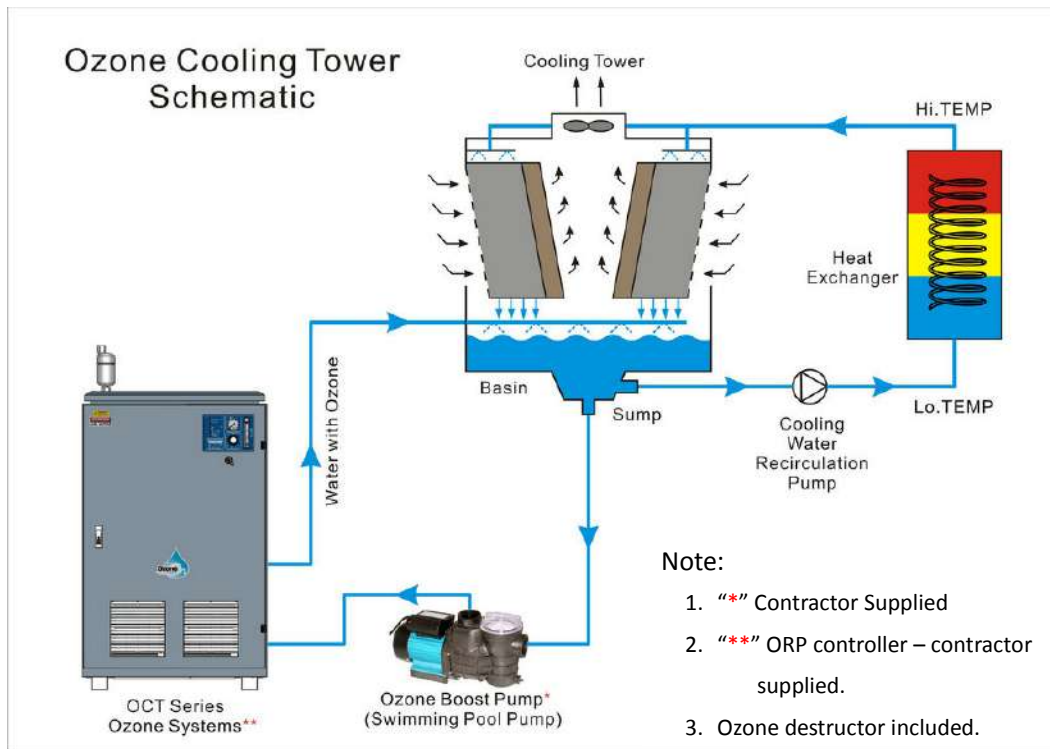
Rear View

# Specifications Sheet

SPECIFICATION	OCT-10	OCT-20	OCT-30	OCT-40
Ozone Output	10g/hr	20g/hr	30g/hr	40g/hr
Matched Cooling Ton	100-200T	200-400T	300-600T	400-800T
Equipped Oil-less Compressor QTY. (Flow @ Pressure)	One (2.4SCFM @ 30psi)	One (2.4SCHM @ 30psi)	Two (4.8SCHM @ 30psi)	Two (4.8SCHM @ 30psi)
Water Connection Size	Inlet: 1-1/4" Outlet: 2"	Inlet: 1-1/4" Outlet: 2"	Inlet: 1-1/4" Outlet: 2"	Inlet: 1-1/4" Outlet: 2"
*Power Requirement	120V 60HZ Single Phase 500W	120V 60HZ Single Phase 650W	120V 60HZ Single Phase 1050W	120V 60HZ Single Phase 1200W
** Ozone Boost Pump Requirement	10GPM @ 60TDH	20GPM @ 60TDH	30GPM @ 60TDH	40GPM @ 60TDH
**ORP Controlled	Yes (Set @ 200-300mv)	Yes (Set @ 200-300mv)	Yes (Set @ 200-300mv)	Yes (Set @ 200-300mv)

Note: "\*" Power supply not included. "\*\*\*" Furnished by contractor.

## Ozone Cooling Tower Schematic



Ozone Water Technologies, Inc.

26 Oak Street PO Box 1437 Tryon, NC 28782

828-859-2015 [www.ozonewatertech.com](http://www.ozonewatertech.com) [info@ozonewatertech.com](mailto:info@ozonewatertech.com)